

How to Revert the Win7 1394ohci.sys to the Legacy Driver

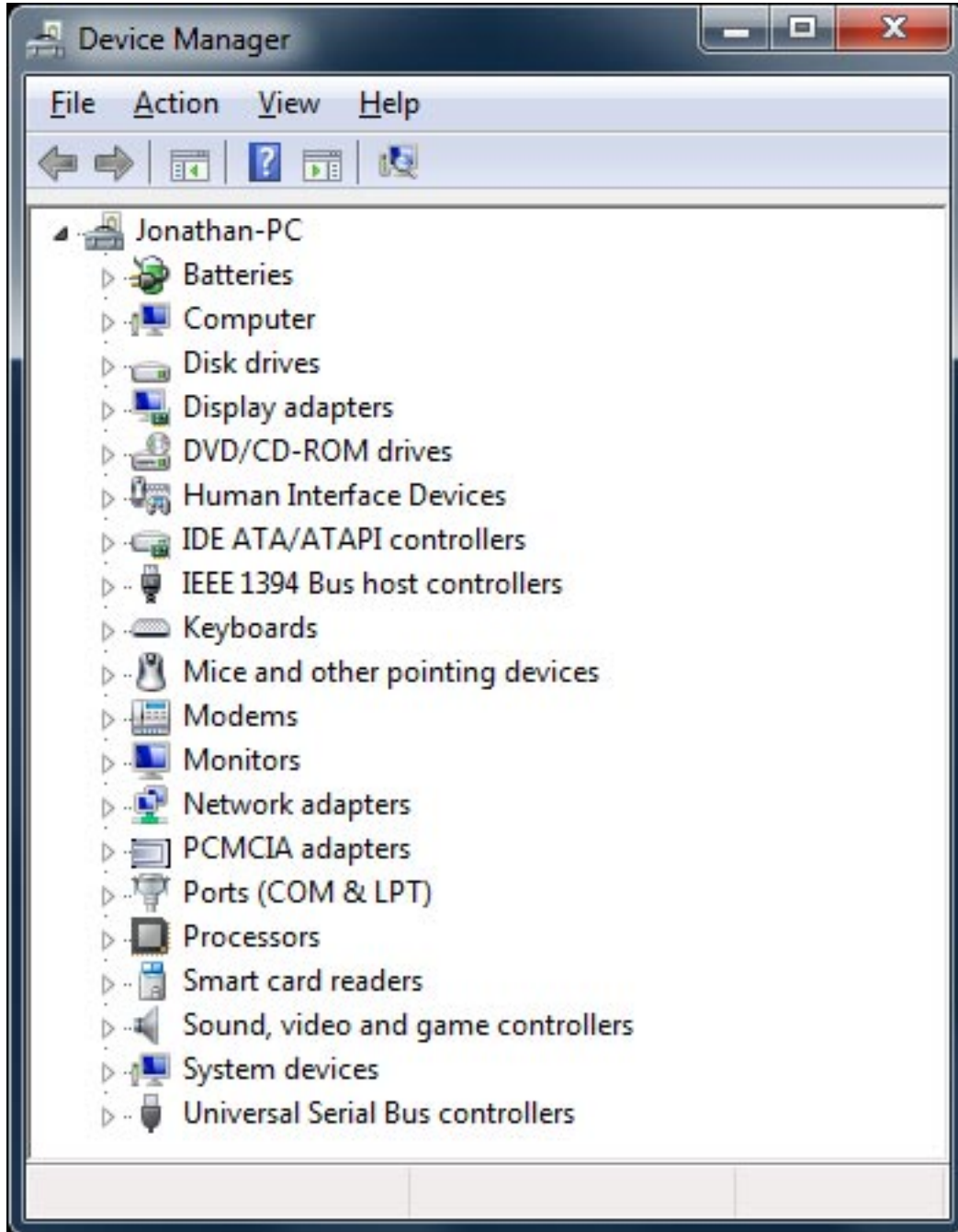
Content provided by: FlexRadio Systems Engineering

The following instructions describe how to revert to the Vista or legacy 1394 Host controller bus driver. This driver is provided for backwards compatibility for Firewire device drivers that are not compliant with the new Windows 7 1394ohci.sys driver architecture.

Step 1. Opening the Windows 7 Device Manager

Click on the **Start** button. Now, type **devmgmt.msc** in the box with the text "*Search Programs and Files*" and press the **<Enter>** key. This will open the Device Manager.

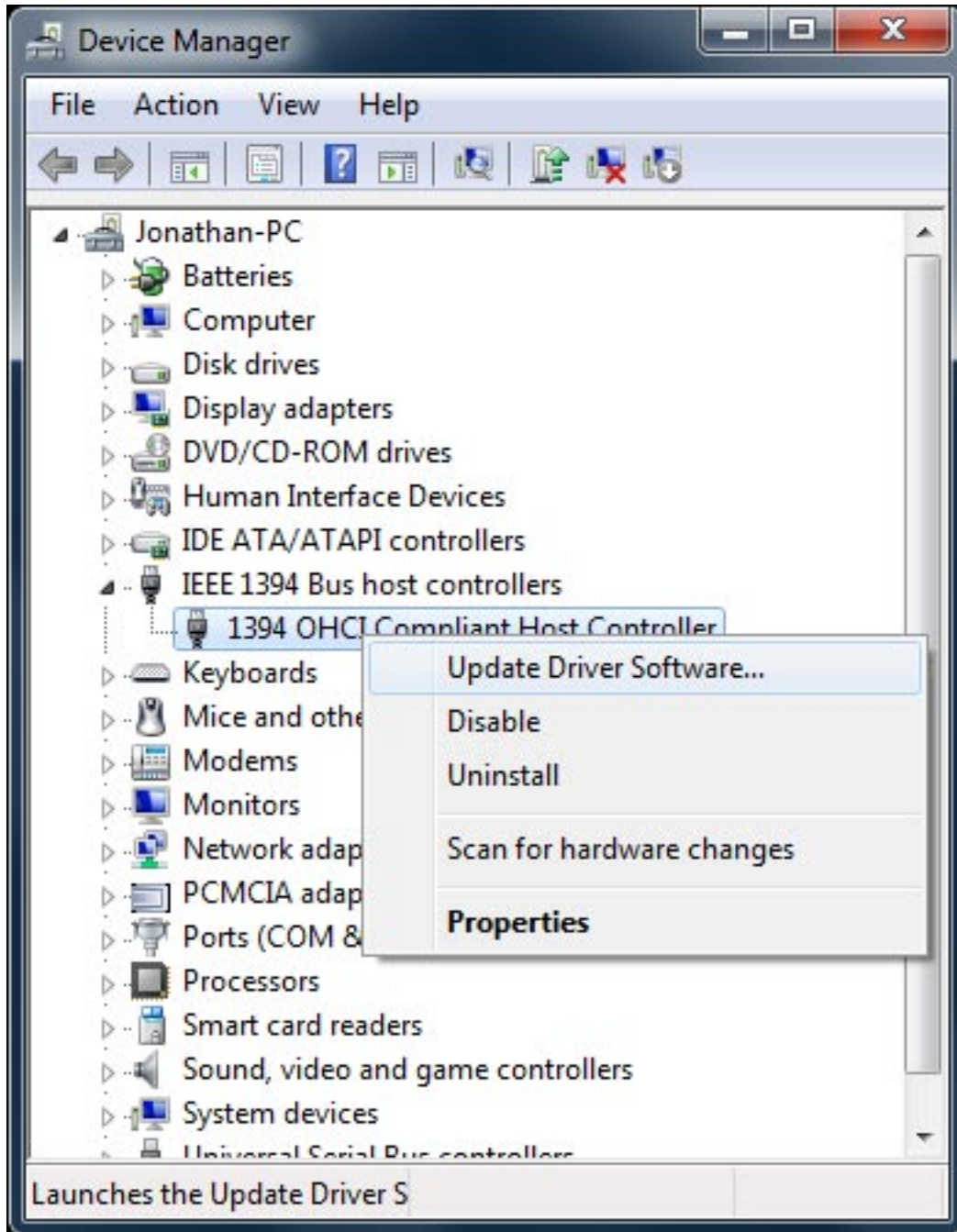
How to Revert the Win7 1394ohci.sys to the Legacy Driver



Step 2. Expand the IEEE 1394 Bus host controllers object so you can see the installed 1394 host controllers

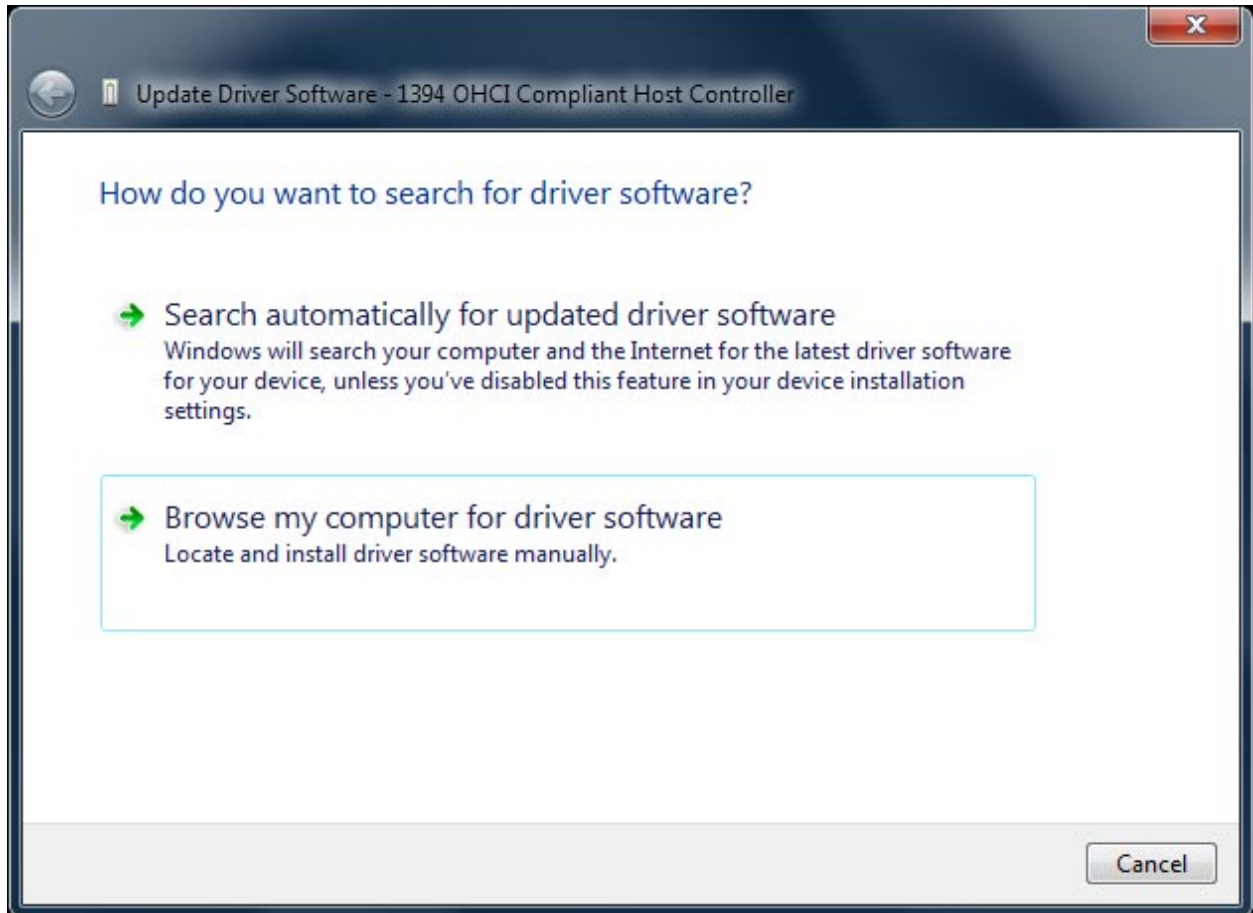
Step 3. To do this, locate the Firewire (1394) controller in the **Device Manager** tree that you will be using with your FLEX-x000 software defined radio, right click it, and select **Update Driver Software....** This will open the Update Driver Software window.

How to Revert the Win7 1394ohci.sys to the Legacy Driver



Step 4. Now, select the **Browse my computer for driver software (Locate and install driver software manually.)** option. This will advance you to the next window where you will be prompted to browse for driver software on your computer. Read ahead, because you will not be doing any browsing.

How to Revert the Win7 1394ohci.sys to the Legacy Driver



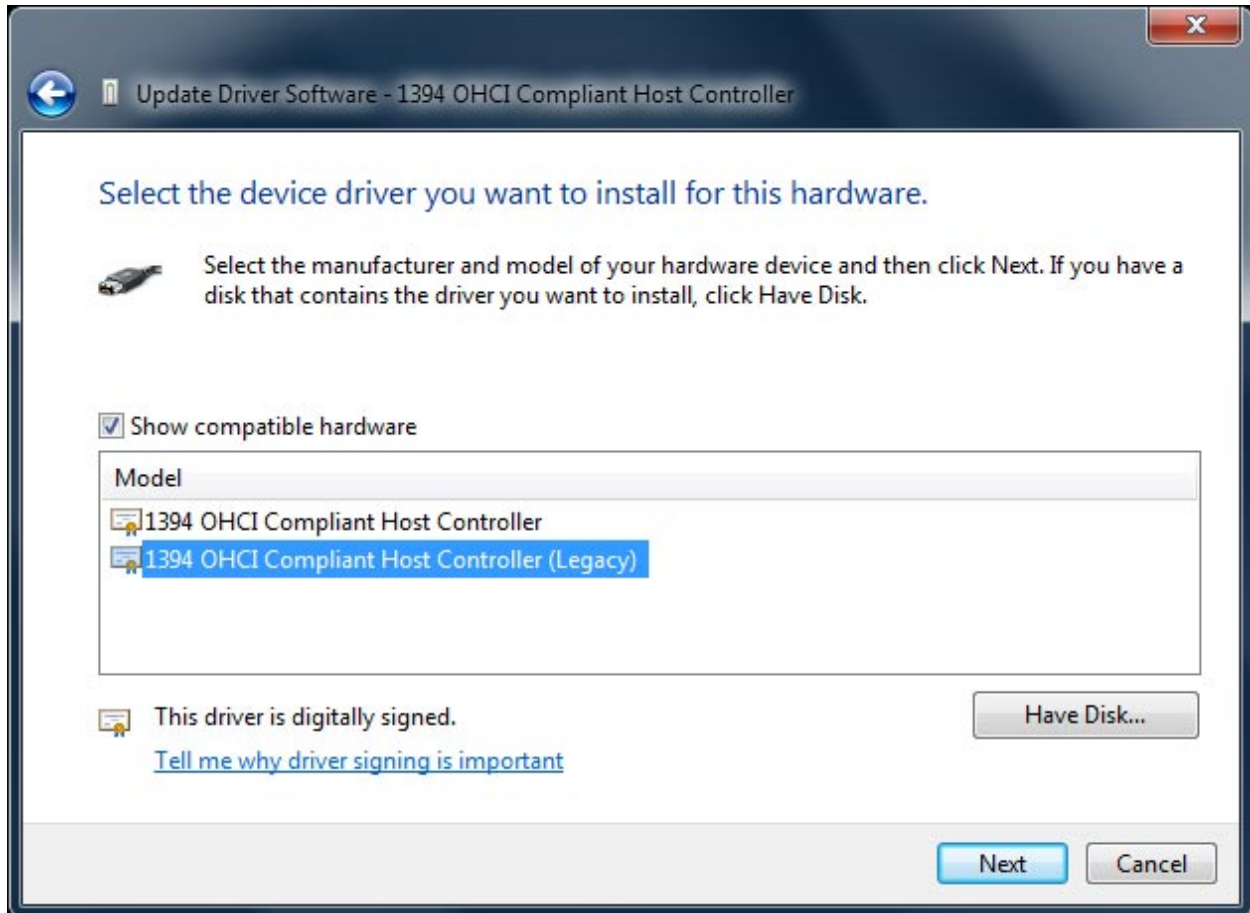
Step 5. Now, beneath the browsing option select **Let me pick from a list of device drivers on my computer (This list will show installed driver software compatible with the device, and all driver software in the same category as the device.)**. This will advance you to the next window where you will be prompted to select the device driver you want to install for this hardware.

How to Revert the Win7 1394ohci.sys to the Legacy Driver



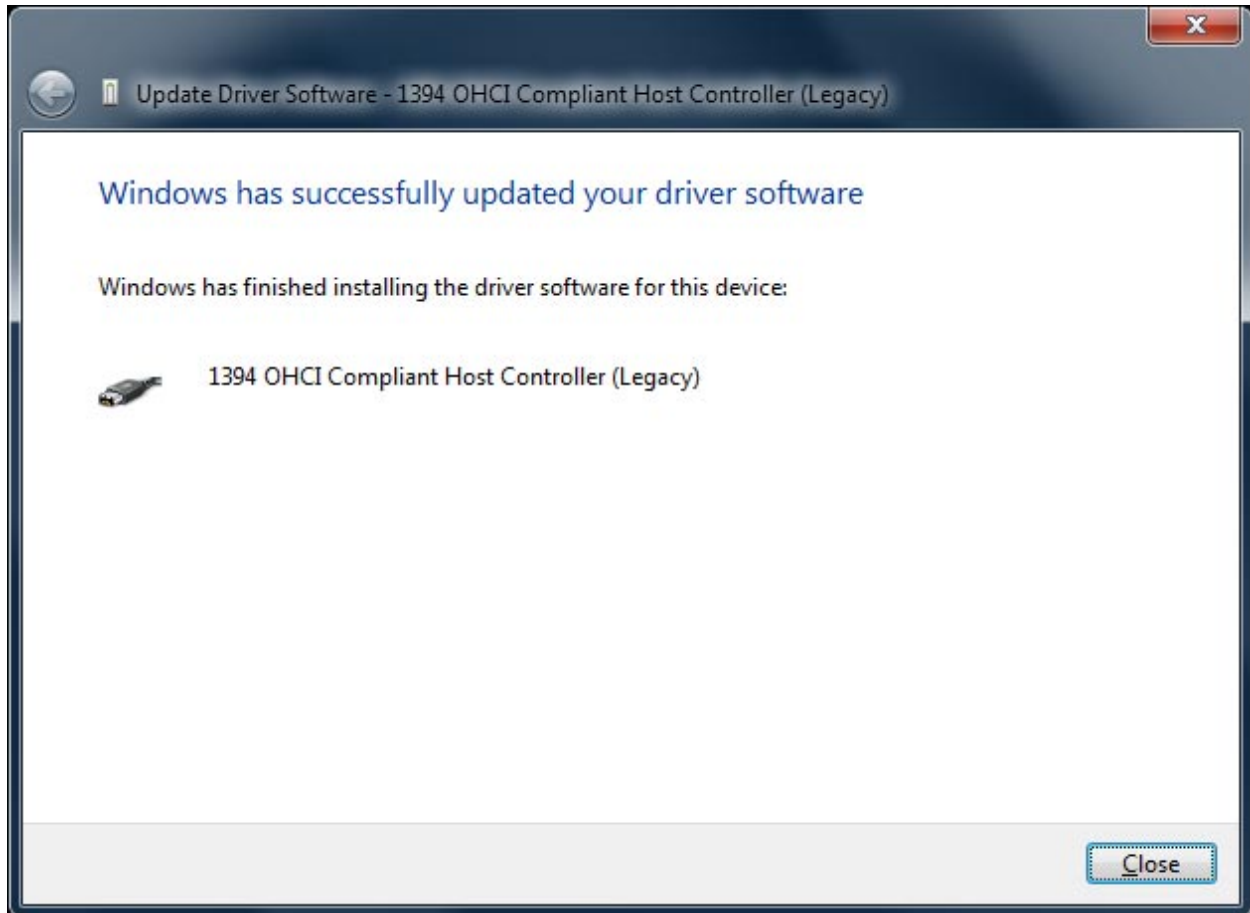
Step 6. Now, select the 1394 OHCI Compliant Host controller with the word **Legacy** appended to it and then click **Next**. This will advance you to the next window where the driver will be installed.

How to Revert the Win7 1394ohci.sys to the Legacy Driver



Step 7. When the installation is complete you will advance to the final window where you are informed that Windows has successfully updated your driver software.

How to Revert the Win7 1394ohci.sys to the Legacy Driver



This KB article may reference additional files that are available on the FlexRadio Systems web site Downloads page. Please use the URL(s) below to download the referenced materials.

An Adobe Acrobat Reader may be required to open the file. You can download Adobe Acrobat from [here](#).

KB Source Document(s):

None Referenced

FlexRadio Systems Knowledge Center

<http://kc.flex-radio.com/KnowledgebaseArticle50433.aspx>